



華盛精密(香港)國際有限公司  
Hason Precision (HK) International CO., LTD.

地址: 香港九龍旺角道33號凱途發展大廈7樓04室  
Address: Unit 04, 7/F, Bright Way Tower, No. 33 Mong Kok Road, Kowloon, Hong Kong.  
TEL: 00852-27935511  
FAX: 00852-35902333

華盛精密模具配件有限公司  
Hason Precision Mould Fittings Co., Limited.

地址: 廣東省深圳市沙井鎮馬鞍山第一工業區10棟  
Address: No.10, 1st Industrial Park, Ma An Shan, Shajing Town, Shenzhen City, Guangdong Province, China  
TEL: 86-755-23022848  
FAX: 86-755-23022948  
E-mail: sales@hason-precision.com

[www.hason-precision.com](http://www.hason-precision.com)

HASON  
PRECISION MOULD  
FITTINGS

[www.hason-precision.com](http://www.hason-precision.com)



金火牌  
137 134 553639 2588 7299  
GOLD-FIRE

華盛精密(香港)國際有限公司  
Hason Precision (HK) International CO., LTD.

華盛精密模具配件有限公司  
Hason Precision Mould Fittings Co., Limited.



## —— 走進華盛 *Enter Hason*

平衡之度, 看企業家的思想  
發乎心, 看精工製造的理念  
和諧些, 看人文與經營價值的互融  
超前而為, 看理性指導行為的藝術  
個性些, 看強勢品牌的發展之路  
溫情些, 看企業“予”和“得”之辨證思維

Enterpriser thous  
Handcrafted marking ideals  
Perfect harmony in human value and management  
Art of rational direct action  
The development of prevailing brand  
The ideal of "contribution" and "gain"



## 新視野 ◉ 新未來 New Vision & New Future

高度決定視野 / 角度改變觀念 / 尺度把握未來  
The height of the field of view angle change of mindset to grasp the scale of the future.

陽光的昨天 / 我們衷心感謝您的信任  
陽光的今天 / 我們更期待您的關心和支持  
陽光的明天 / 我們將和您一起創造輝煌

Sun yesterday, we thank you for your trust  
Sun today, we look forward to your care and support  
The sun of tomorrow, we will work with you to create brilliant



華盛精密模具配件有限公司成立於2000年，專業製造各類塑膠與五金模具標準配件，精密模具型芯，鑲件，機械零部件，工裝夾具，CNC機械加工等非標零配件。

我司的主要產品：塑膠模與五金模具標準配件（頂針，司筒，導柱，導套，凹模，衝頭，錳鋼衝頭，錳鋼襯套，限位夾）等，CNC機械加工非標件，治具，精密零件。廣泛應用於精密塑膠模具，五金衝壓模具，壓鑄模具，精密工裝及精密自動化機械等諸多領域，為客戶提供精密零件加工全方位解決方案。

在加工方面，我們具備了高精度的加工設備，也有專業的技術人員。針對於客戶需求製造出高水平的成品，超越客戶的質量要求。

我們的企業文化是誠信，質量，效率和專業精神。它致力於以合理的價格，優良的品質，準時交貨和優質的服務，滿足廣大客戶的不同要求。隨時歡迎貴司的詢價和訪問，期待與您的合作，我們將會竭誠為您服務。

#### 優質服務，領導行業

\*24小時全天電話應答客戶查詢，聆聽客戶需求！

\*快速報價：如無特殊情況，可以在24小時之內發出報價單！

\*有競爭力的價格，優質的產品！

\*全方位服務：按照客戶需求，為您提供最有效的解決方案！



## 公司簡介 | COMPANY PROFILE

Hason Precision Mould Fittings Co.,Ltd, established in 2000, is a leading manufacturer specialized in producing precision components for pressing dies, plastic molds, hardware molds and CNC machining Parts etc.

Our main products are: Mold components( Ejector pin, ejector sleeves, core pins, guide pins, guide bushing, Interlocks, punches,Carbide punches,Button die, die sets, carbide dies, date stamp, mold insert,straight block set, etc) . Those are used in the industries of punching, stamping and molds and equipment for plastics injection molding. We are able to manufacture all kinds of mould components as per DME, HASCO, CUMSA, STRACK, MISUMI, DAYTON and other world-famous standards. Apart from the standard parts, we also offer CNC process services and automatic parts, supply customized products to fit our customer specifications.

Hason Precision is equipped with advanced facility, which has been achieved by continually investing in the latest technology such as high precision CNC turning, grinding, milling and E.D.M. capability together with computerised, fully documented, vacuum heat treatment processing.

In the meanwhile,For the raw material we use for parts are imported from Japan, and processing skills adopted Japanese technology with severe QC control system, plus veteran professional workers to ensure to the high precision parts and the long life of parts'mechanical performance.In year 2010, We have obtained the certificates of ISO9001:2008.

We aim at integrity, quality, efficiency and professionalism. It is committed to meeting the strictest requirements of our customers by reasonable pricing, fine quality, on-time delivery, and excellent service. Hason will provide innovative valued products and services to allow our customer to be competitive in the global market.

#### Quality services to leading industry

\*24-hour telephone promised to customer inquiries, to listen to customer needs.

\*Quick Quote: absence of exceptional circumstances, the quotation can be issued within 24 hours!

\*Competitive prices, quality products!

\*Full range of services: according to customer needs, provide you with the most effective solution!





**2000<sup>+</sup>**

2000年創立華盛精密模具配件有限公司, 專業致力於塑膠模具標準零件、非標零件的加工。  
 Hason Precision Mould Fittings Co., Ltd is founded in 2000, Specialized in manufacturing standard plastic mold components, Non-Standard parts.

**2002<sup>+</sup>**

2002年華盛公司規模擴大, 喬遷新廠。  
 Year 2002, Hason Precision Mould Fittings Co., Ltd enlarged its scale, and moved the new factory.

**2003<sup>+</sup>**

2003年在香港成立華盛精密(香港)國際有限公司  
 Year 2003, Hason Precision (HK) International Co., Ltd was founded in HONGKONG.

**2004<sup>+</sup>**

2004年開始生產五金模具配件并通過國際質量管理體系ISO9001:2000認證  
 Year 2004, Start to produce press die mold components and got ISO 9001:2000 certification.

**2006<sup>+</sup>**

2006年成為深圳市機械模具協會理事單位。  
 Year 2006, Became member of Shenzhen mould association.

**2008<sup>+</sup>**

2008年開始汽車模具配件的研發制造, 成立汽車模具零件事業部  
 Year 2008 Start to research and manufacturing auto mould accessories, and founded the department of auto mould accessories.

**2011<sup>+</sup>**

2011年成立FA工廠自動化零件事業部, 開始生產精密機械零件。  
 Year 2011, Business Dept. for automation products in FA factory was founded. And start to produce precision machinery parts.

**2013<sup>+</sup>**

2013年華盛提升品質保障體系, 展開新一輪品牌升級建設, 全新布局企業戰略...  
 Year 2013, Hason Fully promote quality guarantee system, construction of a new round of brand upgrade, the new layout of the enterprise strategy.



永無止境.....  
 NEVER-ENDING





**精英力量** TEAM STRENGTH

**成功来自于每一位员工的付出**

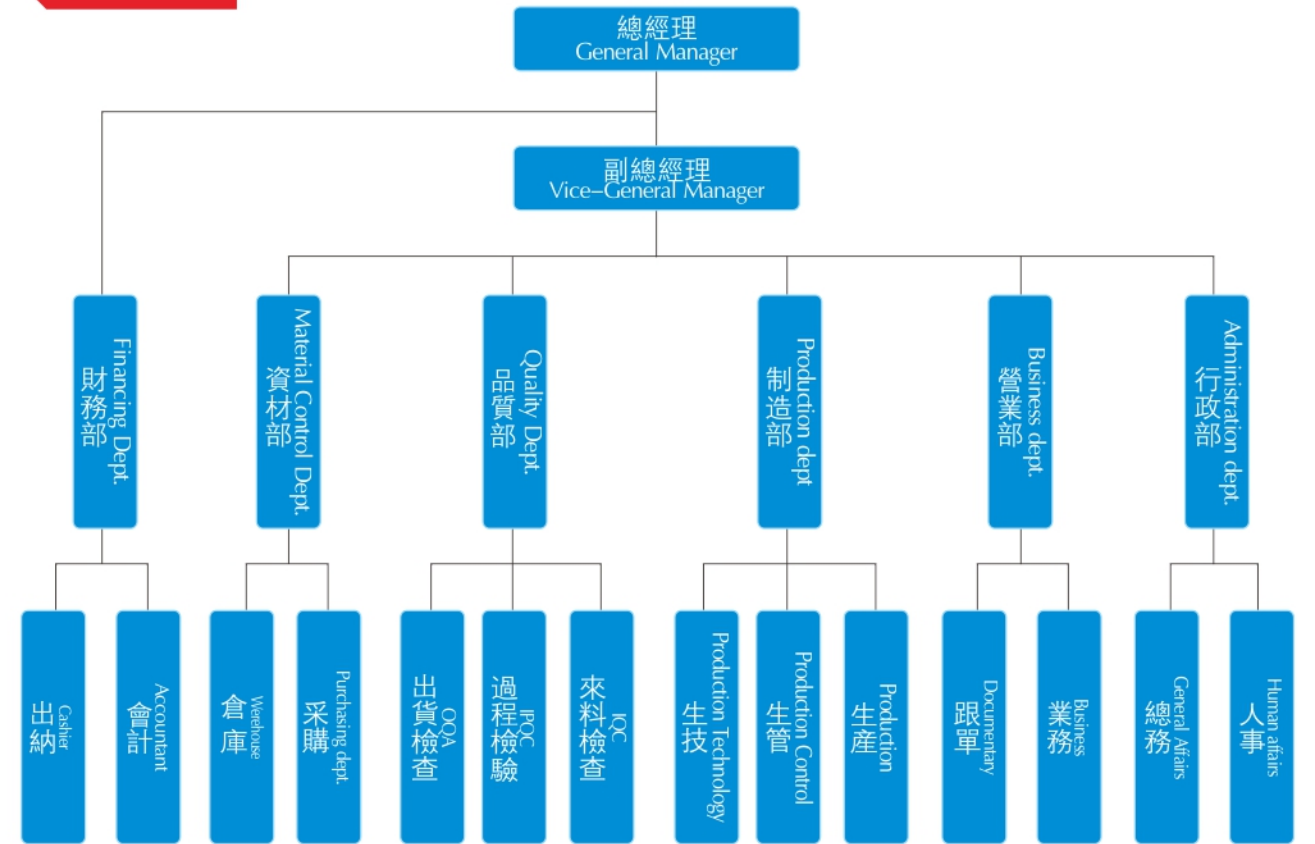
這是一個竞争空前激烈的時代，一個人的力量十分的有限，即便是一位出類拔萃的“英雄人物”也需要一個執行的團隊，唯有共同的付出才是成功的關鍵。

**SUCCESS FROM EACH EMPLOYEE'S PAY**

This is a competitive unprecedented era of intense power of one person is very limited, not only is an outstanding hero "also needs an executive team, only the co-pay is the key to success.

**組織結構**

ORGANIZATION CHARTH







24小時全天電話應答客戶查詢, 聆聽客戶需求!  
 快速報價: 如無特殊情況, 可以在24小時之內發出報價單!  
 有競爭力的價格, 優質的產品!  
 全方位服務: 按照客戶需求, 為您提供最有效的解決方案!

24-hour telephone promised to customer inquiries, to listen to customer needs.  
 Quick Quote: absence of exceptional circumstances, the quotation can be issued within 24 hours!  
 Competitive prices, quality products!  
 Full range of services: according to customer needs, provide you with the most effective solution!



敏銳 / 誠信 / 質量 / 效率 / 專業  
 KEEN, INTEGRITY, QUALITY, EFFICIENCY, PROFESSIONAL





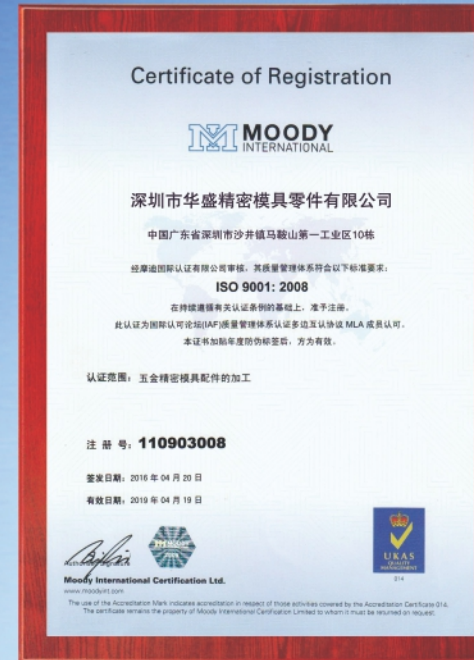
蔡司三坐標測量儀 Zeiss CMM

卓越品質  
超越價值  
EXCELLENT  
QUALITY  
BEYOND  
VALUE



質量是企業立足之本, 優質的產品是企業打入世界市場的强大武器。為了創造至優至尊的產品, 嚴把加工過程的每一道關口, 力求以一流的產品應對激烈的市場競爭。

Quality being vital for an enterprise, qualified products are the powerful weapon to enter into international market. Out of a desire to produce superior products, stresses on every particular in process. We are committed to responding to the furious market competition by quality products.



質量存在于人類生存的一切地方  
Quality exists in all parts of human existence.







數控萬能磨床  
CNC grinding machine



成型研磨車間  
Grinding and forming workshop



桌上車床  
The desk lathe



高速車床  
High speed lathe



銑床  
Milling machine



EDM加工  
EDM processing



平面研磨  
Plane grinding



頂心磨床  
Top center grinding machine



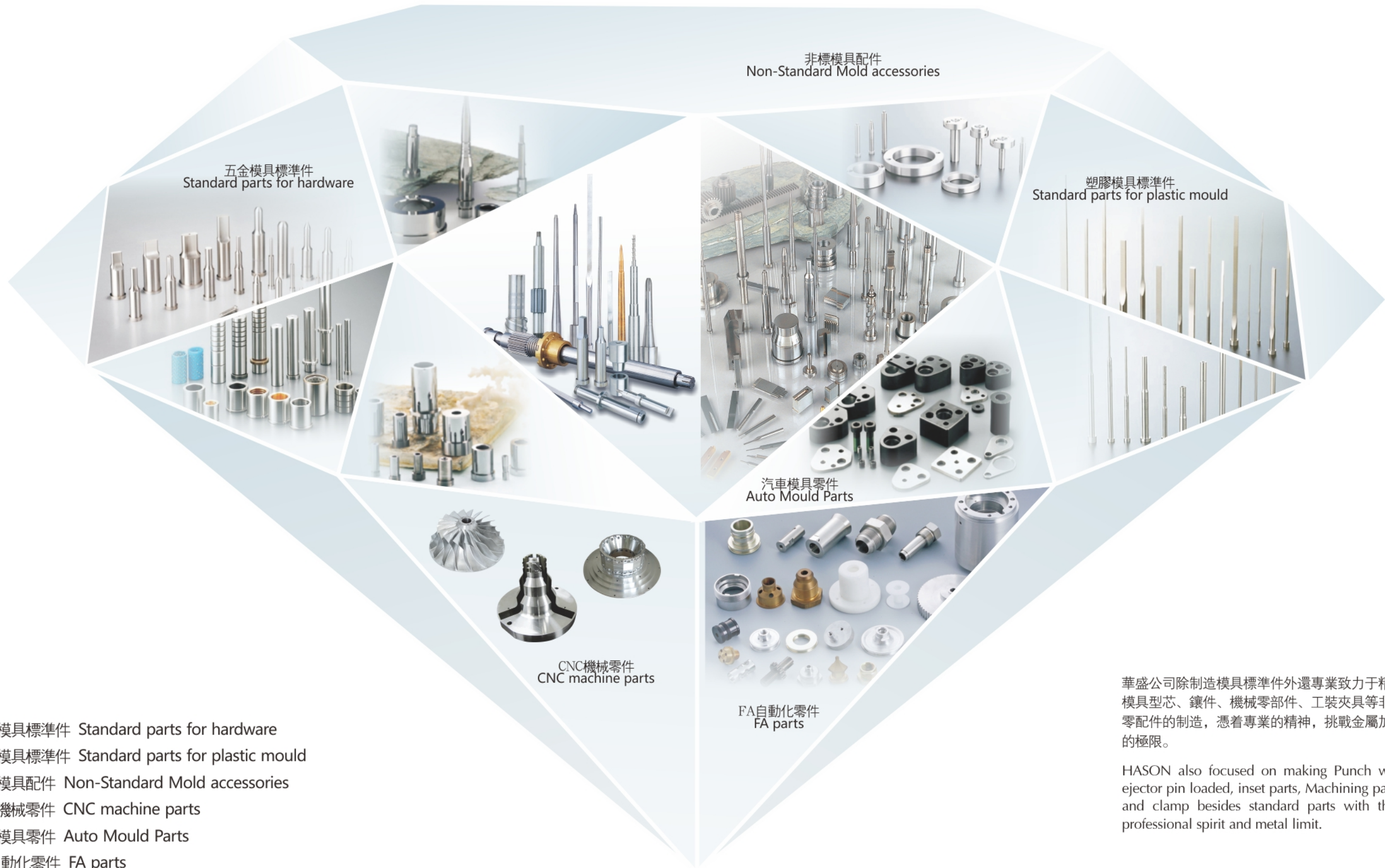
“工欲善其事，必先利其器” 公司多次從外國引進了先進的精加工設備，零件的加工精度最高可到達±0.001mm公差範圍，大大提高了產品質量，縮短了產品制作周期，保證了客戶的滿意度。

"one who wishes to be good at his work should sharpen his tools first." Our company imported high precision CNC machine many times for improving the quality of the products and decreasing the delivery time which increase our customer satisfaction. The machining tolerance of our machine can reach ±0.001mm.

中走絲線切割  
Wire cutting Machine







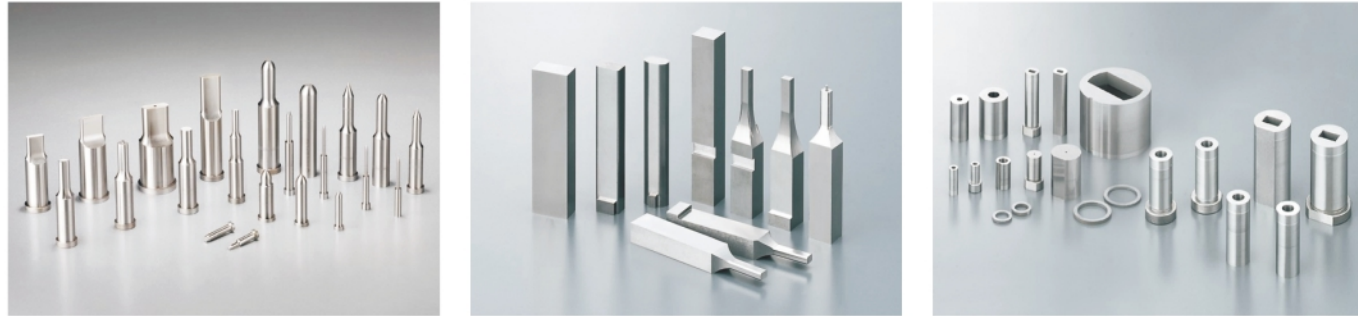
- 五金模具標準件 Standard parts for hardware
- 塑膠模具標準件 Standard parts for plastic mould
- 非標模具配件 Non-Standard Mold accessories
- CNC機械零件 CNC machine parts
- 汽車模具零件 Auto Mould Parts
- FA自動化零件 FA parts

華盛公司除制造模具標準件外還專業致力于精密模具型芯、鑲件、機械零部件、工裝夾具等非標零配件的制造，憑着專業的精神，挑戰金屬加工的極限。

HASON also focused on making Punch with ejector pin loaded, inset parts, Machining parts, and clamp besides standard parts with their professional spirit and metal limit.



五金模具標準件 Standard parts for hardware



塑膠模具標準件 Standard parts for plastic mould



汽車模具零件 Auto Mould Parts



非標模具配件 Non-Standard Mold accessories



鎢鋼模具零件 Tungsten parts



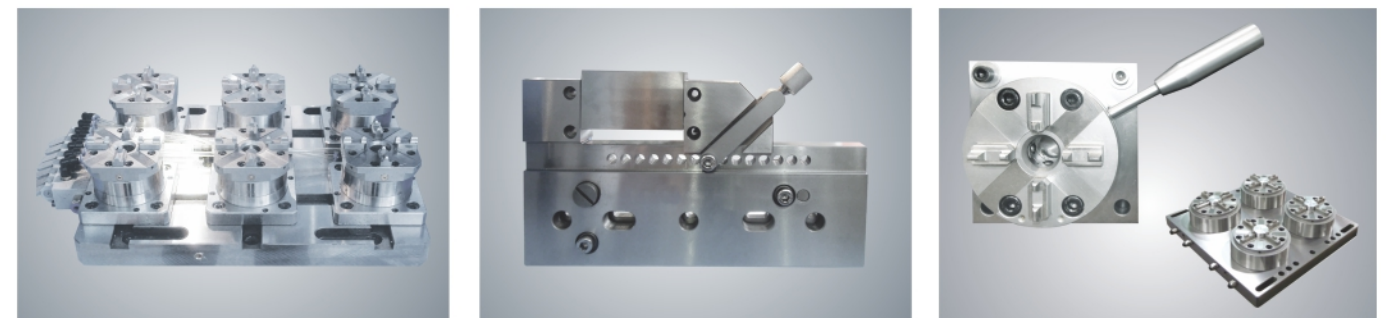
模架用組件 Parts for Die Sets



CNC機械零件 CNC machine parts



工裝夾具 Clamp







SKD-61標準級真空處理單節射梢 STRAIGHT EJECTOR PIN  
SKD-61標準級氮化處理單節射梢 STRAIGHT EJECTOR PIN  
SKH-51標準級單節射梢 STRAIGHT EJECTOR PIN  
SKD-61標準級氮化處理雙節射梢 STEPPED EJECTOR PIN  
SKH-51雙節射梢 STEPPED EJECTOR PIN



FDAC 標準級單節射梢管 FDAC EJECTOR SLEEVE  
SKH-51標準級方型扁射梢 RECTANGULAR EJECTOR PIN  
SKD-61標準級真空處理方型扁射梢 RECTANGULAR EJECTOR PIN  
拔料梢 RUNNER LOCK PIN  
點式澆口套 PIN-POINT GATE BUSHING



帶肩點式澆口套 WITH SHOULDER-POINT GATE SETS  
斜撐梢 ANGULAR PIN  
拖梢 SUPPORT PIN  
射梢板導柱 EJECTOR LEADER PIN  
引導頂出梢 EJECTOR LEADER



引導頂出梢 EJECTOR LEADER  
頂推梢 PUSHER PIN  
頂推梢 PUSHER PIN  
前端加工直式梢 TOP PROCESS STRAIGHT CORE PIN  
脫模導柱 -凸緣式- PRECISION LEADER PIN



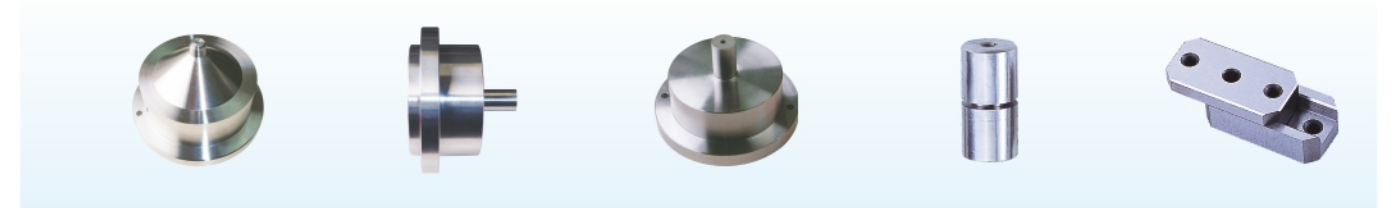
精密級導柱 -長度LN指定- PRECISION LEADER PIN  
脫模導套-附帽- LEADER BUSHING  
脫模導套-直身- LEADER BUSHING  
精密導套 -凸緣型/直型- PRECISION LEADER BUSHING  
精密導套 -凸緣型/直型- PRECISION LEADER BUSHING



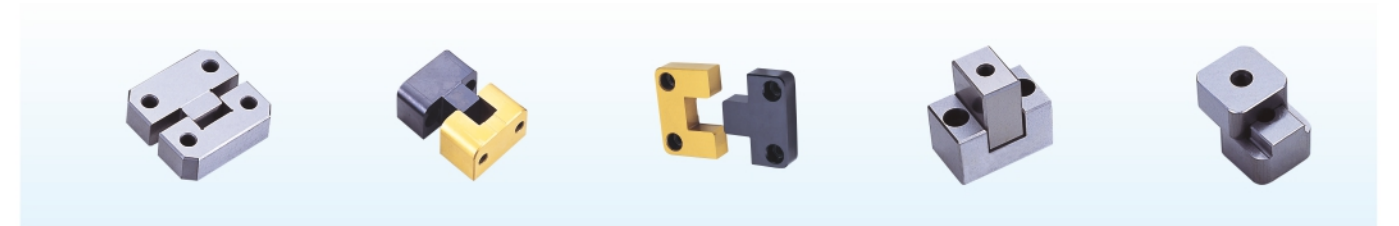
直身導套 -自潤型/無給油型- LEADER BUSHING  
凸緣導套 -自潤型/無給油型- LEADER BUSHING  
射梢板導套 EJECTOR LEADER BUSHING  
直身導套 -自潤型/無給油型- LEADER BUSHING  
凸緣導套 -自潤型/無給油型- LEADER BUSHING



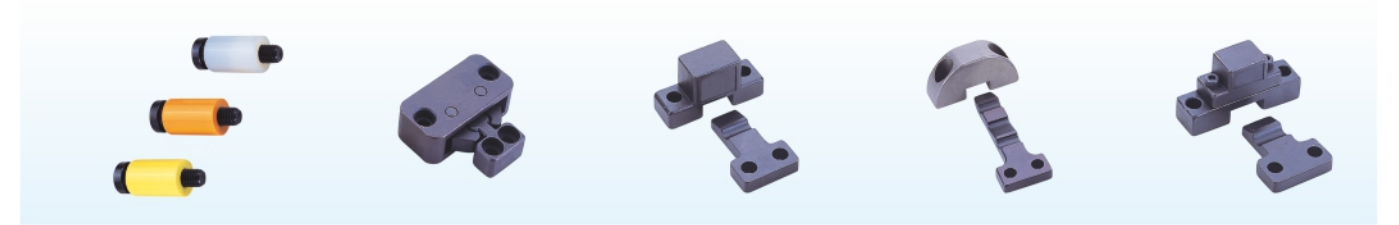
鋼珠套 BALL RETAINER (BRASS)  
A型澆嘴 SPRUE BUSHING -TYPE A-  
B型澆嘴 SPRUE BUSHING -TYPE B-  
C型澆嘴 STANDARD TYPE SPRUE BUSHING -TYPE C-  
小水口標準特殊注口襯套(φ100) SPECIAL SPRUE BUSHING-SMALL INJECTION GAP-



小水口標準特殊注口襯套(φ120) SPECIAL SPRUE BUSHING-SMALL INJECTION GAP-  
大水口標準特殊注口襯套 SPECIAL SPRUE BUSHING-BIG INJECTION GAP-  
大水口標準特殊注口襯套 SPECIAL SPRUE BUSHING-BIG INJECTION GAP-  
定位柱 TAPER PIN SET  
導柱輔助器 TAPERED BLOCK SET



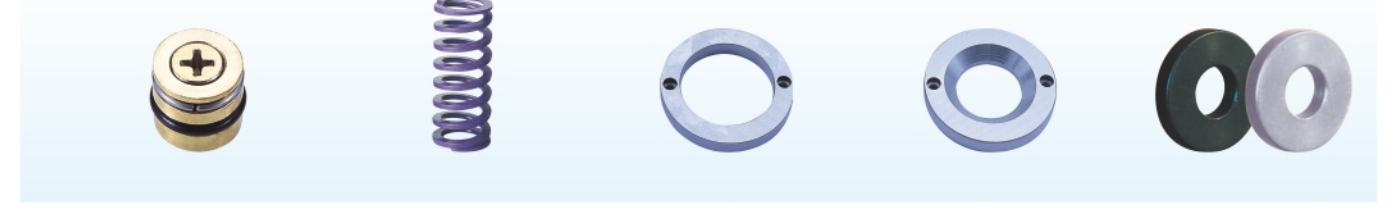
T型輔助器 STRAIGHT BLOCK SET -T TYPE -  
導位固定塊 -TTL TYPE- SIDE LOCKS -TTL TYPE-  
導位固定塊 -TSL TYPE- SIDE LOCKS -TSL TYPE-  
導位固定塊 -直式- LOCKING BLOCK SETS-STRAIGHT TYPE-  
導柱輔助器 TAPER BLOCK SET-GTBS TYPE/TAPER BLOCK SET-GTBL TYPE



樹脂開閉器 PARTING LOCKS  
開閉器 SLIDE LOCK  
開閉器 SLIDE LOCK  
開閉器 SLIDE LOCK  
開閉器 SLIDE LOCK



扣模器 SLIDE LOCK  
模具日期章 DATE MARKED PIN  
定位珠 BALL PLUNGER  
空氣梢 AIR POPPET VALVE  
氣動頂針 AIR JET VALVE



水柱塞 COOLING CIRCUIT PLUG  
塑膠模耐熱彈簧 PLASTIC MODEL HEAT RESISTANT SPRING  
定位圈 LOCATING RING  
定位圈 LOCATING RING  
華司 -汎用型、皿頭型- WASHER





标准H型衝頭 STRAIGHT PUNCH    标准A型衝頭 SHOULDER PUNCH    HB型引導衝頭 STRAIGHT PILOT PUNCH    B型引導衝頭 PILOT PUNCH    HD型抽牙衝頭 BURRING PUNCH



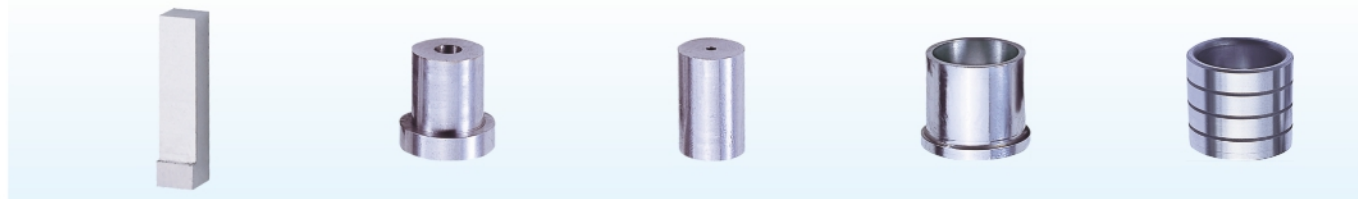
D型抽牙衝頭 BURRING PUNCH    圓錐型衝頭 CONICAL HEAD PUNCH    頂料子母衝頭 EJECTOR PUNCH    水滴型快速更換衝頭 BALL LOCK EJECTOR PUNCH    SA型異形扁型衝頭 SHOULDER PUNCH



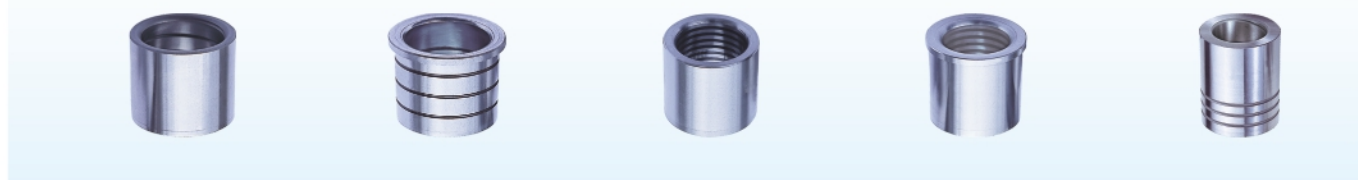
母模襯套 PUNCH GUIDE BUSHING    母模襯套 PUNCH GUIDE BUSHING    超硬直柱式衝頭 - 圓型 - CARBIDE STRAIGHT PUNCH-ROUND    超硬直柱式衝頭 - 圓型 - CARBIDE STRAIGHT PUNCH-ROUND    超硬衝頭 - 拋光加工 - CARBIDE PUNCH -POLISHING-



附通氣孔超硬衝頭 - 拋光加工 - CARBIDE PUNCH WITH AIR HOLE -POLISHING-    超硬小徑衝頭 - 圓形 - CARBIDE QUILL PUNCH-ROUND    二段式超硬衝頭 CARBIDE TWO STEPS TYPE PUNCH    超硬方形衝頭 CARBIDE BLOCK PUNCH    附通氣孔超硬方形衝頭 CARBIDE BLOCK PUNCH WITH AIR HOLE



基本型超硬方形衝頭 CARBIDE BLOCK PUNCH BLANK    精密級超硬鑄度形衝孔下模 PRECISION CARBIDE ANGULAR BUTTON DIE    精密級超硬鑄度形衝孔下模 PRECISION CARBIDE ANGULAR BUTTON DIE    剝料板導套 - 給油型 - STRIPPER GUIDE BUSHING    剝料板導套 - 給油型 - STRIPPER GUIDE BUSHING



剝料板導套 - 給油型 - STRIPPER GUIDE BUSHING    剝料板導套 - 給油型 - STRIPPER GUIDE BUSHING    剝料板導套 - 無給油型 - STRIPPER GUIDE BUSHING    剝料板導套 - 無給油型 - STRIPPER GUIDE BUSHING    模座用鋼珠導套 BALL BEARING GUIDE BUSHING



模座用鋼珠導套 BALL BEARING GUIDE BUSHING    模座用滑動導套 - 油潤滑型 / 自潤滑型 - PLAIN GUIDE BUSHING FOR DIE SET    模座用滑動導套 - 油潤滑型 / 自潤滑型 - PLAIN GUIDE BUSHING FOR DIE SET    剝料板導套 - 鋼珠套用 - STRIPPER GUIDE BUSHING-BALL RETAINER -    剝料板導套 - 鋼珠套用 - STRIPPER GUIDE BUSHING-BALL RETAINER -



剝料板導套 - 鋼珠套用 - STRIPPER GUIDE BUSHING-BALL RETAINER -    剝料板導套與鋼珠套一體型 STRIPPER GUIDE BUSHING & BALL RETAINER    剝料板導套與鋼珠套一體型 STRIPPER GUIDE BUSHING & BALL RETAINER    模座用滾珠導引襯套 BALL SLIDERS FOR GUIDE BUSHING    模座用滾珠導引襯套 BALL SLIDERS FOR GUIDE BUSHING



模座用滾珠導引襯套 BALL SLIDER FOR GUIDE BUSHING    模座用滾珠導引襯套 BALL SLIDER FOR GUIDE BUSHING    無給油導套 - 直柱型 - SELF LUBRICATING BUSH    導引頂出梢 GUIDE LIFTER PIN    導引頂出梢 GUIDE LIFTER PIN



剝料板導梢 - 帶頭型 - STRIPPER GUIDE PIN    剝料板導梢 - 帶頭型 - STRIPPER GUIDE PIN    剝料板導梢 - 直柱型 - STRIPPER GUIDE PIN    剝料板導梢 - 直柱型 - STRIPPER GUIDE PIN    導引頂出梢 GUIDE LIFTER PIN

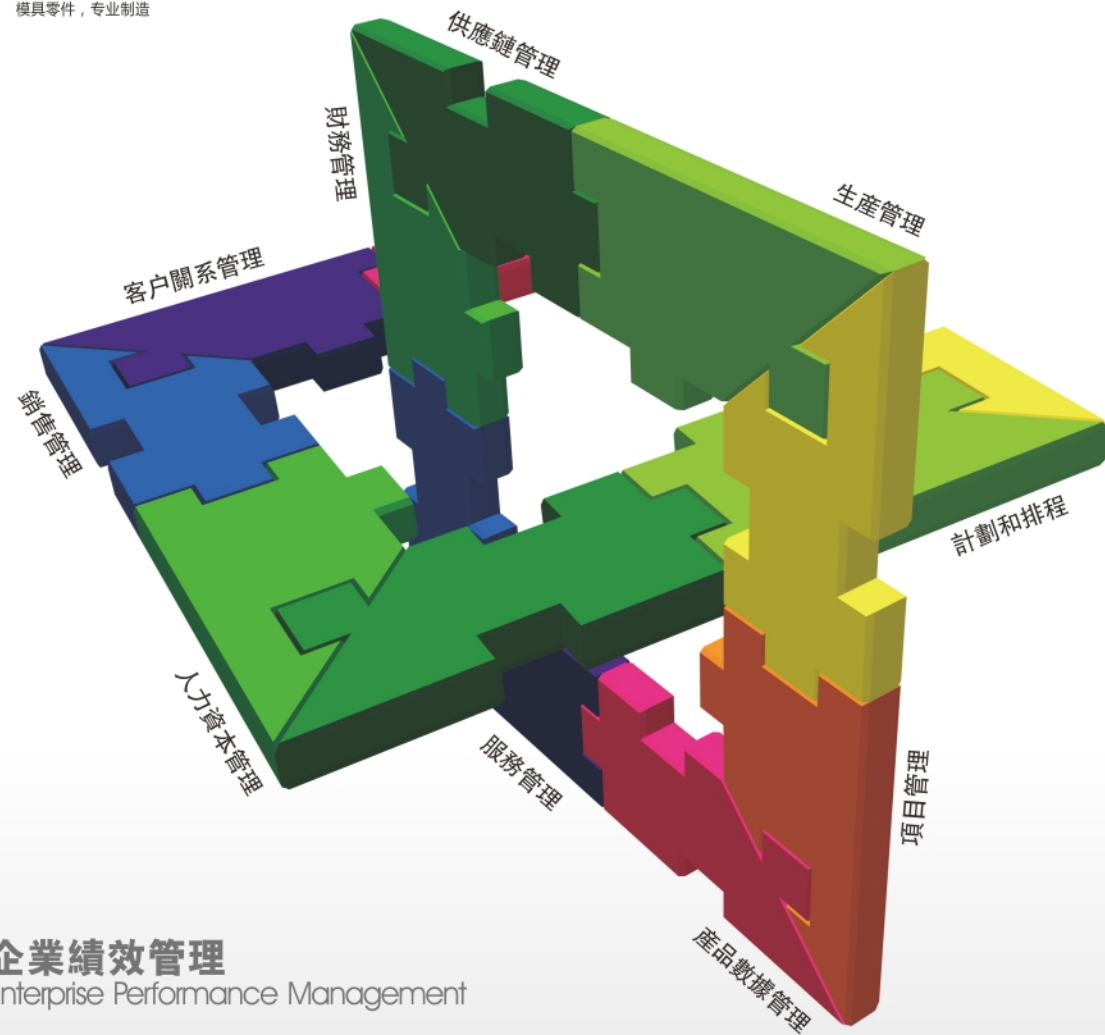


導引頂出梢 GUIDE LIFTER PIN    定位梢 DOWEL PIN    模座用導柱 GUIDE POST FOR DIE SET    模座用導柱 GUIDE POST FOR DIE SET    剝料板導柱 STRIPPER GUIDE PIN



剝料板導柱 STRIPPER GUIDE PIN    次精密級導柱 STRIPPER GUIDE PIN(3um)    次精密級導柱 STRIPPER GUIDE PIN(3um)    次精密級導柱 STRIPPER GUIDE PIN(3um)    剝料板導柱 STRIPPER GUIDE PIN WITH FLANGE





**企業績效管理**  
Enterprise Performance Management

服務是質保體系的一個重要組成部分，為我們特設服務中心，以便更好的為廣大客戶服務。

Service quality is an important part of the system, for our ad hoc service center, in order to better service for our customers.

**合作伙伴** PARTNERS



**管理體系** QUALITY MANAGEMENT

如今，離散型製造商都面臨着變化的挑戰，針對行業的業務特性，華盛公司為了解決訂單生產(MTO)和混合模式離散製造業務瓶頸，提升公司營運效率，與全球第三大企業軟件提供商Infor合作，導入Infor企業資源規劃(ERP)系統，Infor ERP的解決方案將製造業務的所有領域無縫連接起來，包括銷售、生產、財務、採購和服務。通過APS高級計劃排產功能，精益計劃和生產。并與客戶的擴展的供應鏈建立有效的合作關係，從而降低成本，提升交貨期，構建了企業核心競爭力，并提高了客戶的滿意度。

At present, dispersed enterprises are faced with challenges and changes. In view of the particularity of the mould industry, in order to solve the bottlenecks of MTO and mixed mode of dispersed manufacture, also in order to promote the efficiency, Hason cooperated with the Infor which is 3rd biggest software company, used their advanced ERP system. It help us connect with all the work flow include sales, production, finance, purchasing and after sales service. By the classic advanced production system(APS) to plan and manufacture, The production cost decreased, the delivery time became lower. Then our enterprise become more and more competitive and the satisfaction have been promoted by customers.



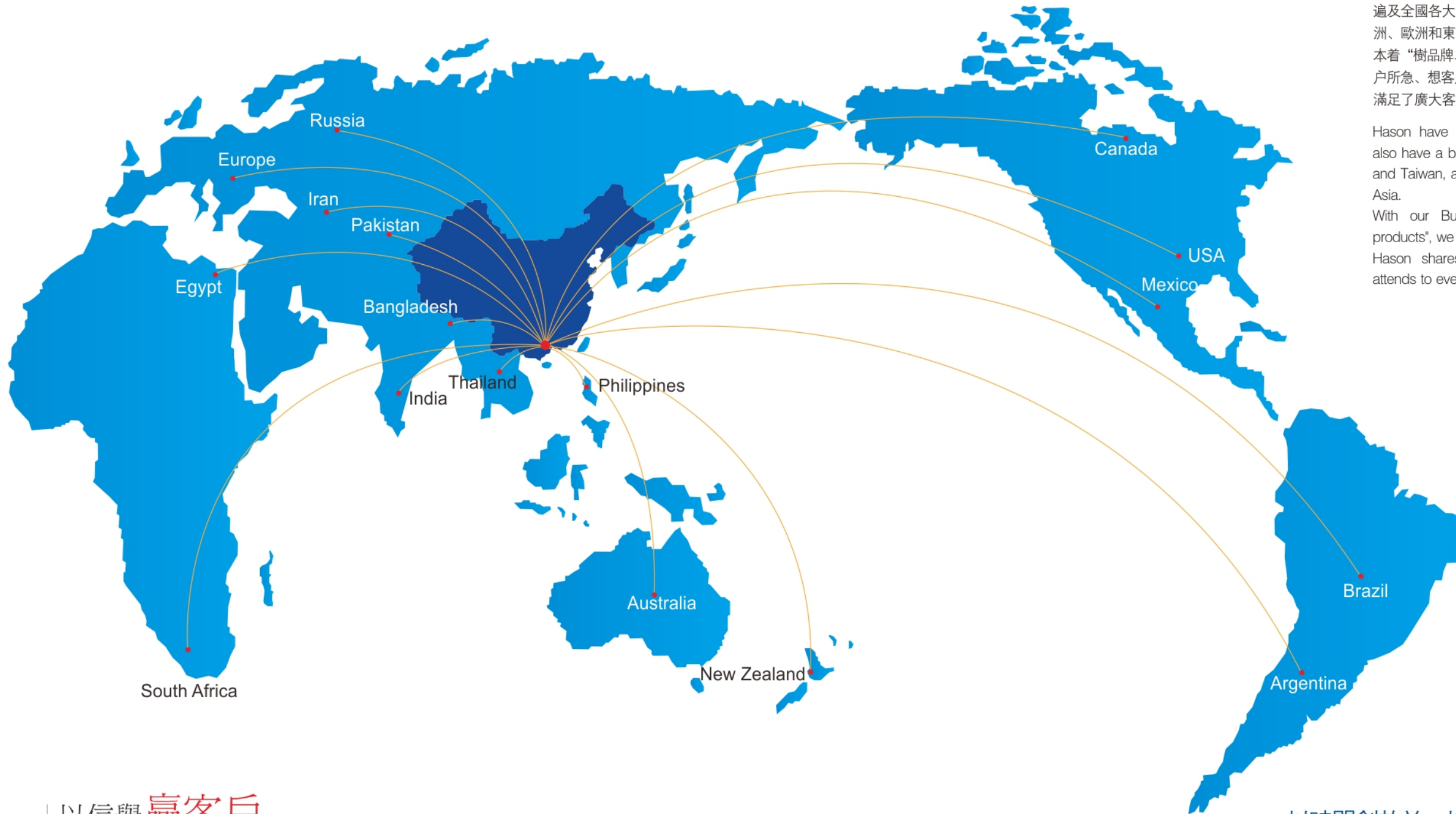
產品國際化，以及企業邁向永續經營，是華盛公司全體同仁在21世紀最大的遠景，基于此，本公司引進先進的設備，招募優秀人才參與，建立更廣的服務網絡，以製造頂級品質的態度，完善生產技術和售前售後服務，對於未來，我們將以更務實的態度，來贏得客戶對我們的信賴。

Aiming at our goal of "sustainable development and marketing internationally" in the 21st century, Hason will continue to introduce the most advanced equipment, select the excellent professional, build up wider service network, in order to provide the customer high-end products and perfect sales service.





**營銷網絡** SALES NETWORK



華盛擁有一支專業化、年輕化、高素質的營銷隊伍，銷售網絡遍及全國各大製造業密集地區及香港、臺灣、日本、韓國、美洲、歐洲和東南亞地區。

本着“樹品牌、建網點、做服務、賣產品”的營銷理念，“急客戶所急、想客戶所想”為客戶提供全方位的解決方案，極大的滿足了廣大客戶的採購需求。

Hason have a professional, young, high-caliber team, we also have a big sales network in the china include Hongkong and Taiwan, also Japan, Korea, America, Euro and southeast Asia.

With our Business philosophy "Brand, network, service, products", we provide the all-directional solution for customer. Hason shares every weal and woe with customers, an attends to every consideration of customers.

以信譽**贏**客戶  
 以誠信**興**企業  
 CREDIT WIN CUSTOMERS  
 INTEGRITY PROMOTION ENTERPRISE

以時間創效益、以質量創市場、以服務創品牌  
 To the time creates the benefit, to the quality creates the market,  
 serves serves the quality creates the market.